



1 BHK & 2 BHK FLATS





ઘર એટલે સંતોષ
ઘર એટલે સુખ
ઘર એટલે સંપૂર્ણતાની અનુભૂતિ

પુશીઓનો ગૃહપ્રવેશ એટલે
આમ્રકુંજ હાઈટ્સ







Unit Plan

1 BHK



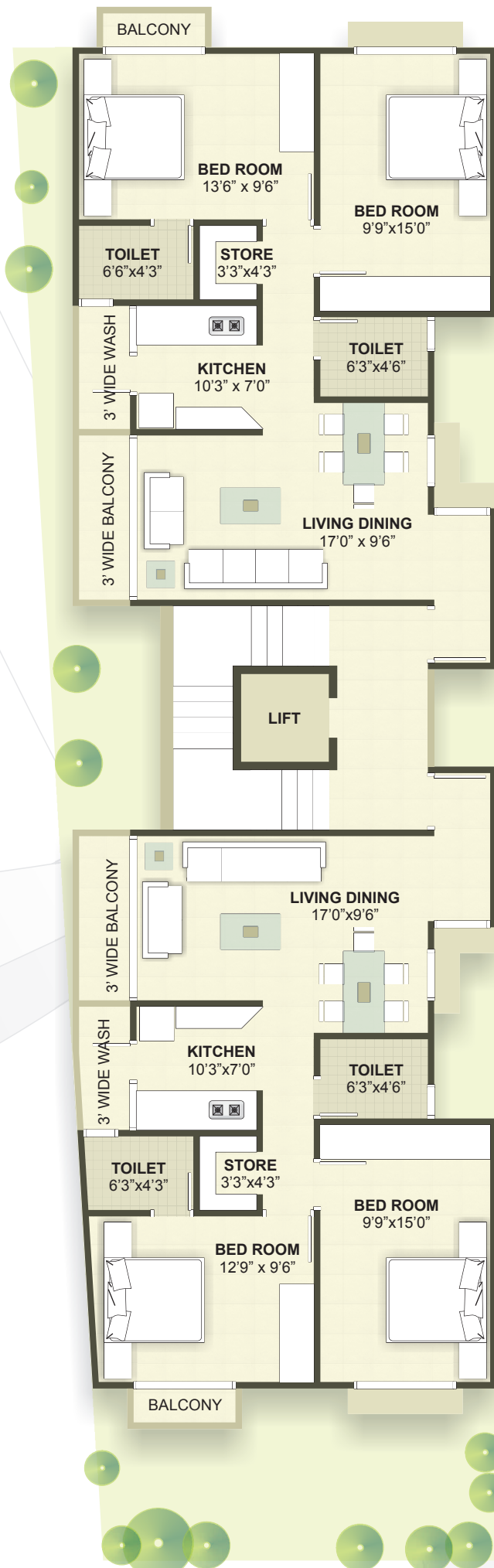
- 101 to 501 = 629 Sqr. Ft.
- 102 to 502 = 645 Sqr. Ft.
- 103 to 503 = 629 Sqr. Ft.
- 104 to 504 = 664 Sqr. Ft.





Unit Plan

2 BHK



101 to 501 = 1187 Sqr. Ft.

102 to 502 = 1147 Sqr. Ft.

Specification

Structure	: Earthquake Resistant R.C.C. Frame Structure
Flooring	: Vitrified Tiles in all rooms
Platform	: Sandwich Platform with Granite Top with Stainless Steel Sink and Glazed Tiles up to Lintel Level.
Toilet	: Toilets with European Commode and premium quality glazed tiles up to lintel level with design concept with good sanitaryware and C.P. fittings, Hot and Cool Water Connections.
Door & Windows	: Doors of all room with wooden frame and flush door shutter with attractive laminate on main door. : All windows of Glass paneled powder coated aluminum sliding.
Wall Finish	: Double Coat sand face plaster on external wall with 100% acrylic paint and internal wall with single mala plaster coated with white putty.
Electrification	: Concealed electrical Single Phase wiring with ISI approved copper wire and modular switches.
Plumbing	: Concealed tubewell with underground tank and overhead water tank insuring uninterrupted 24 hours water supply.

Key Plan



સાઈટ:

શેઠ મ.ભ. હાઈસ્કુલની સામે,
સ્વામીનારાયણ મંદિર રોડ,
પેથાપુર, તા.જી. ગાંધીનગર-૩૮૨૬૧૦
કલ્પેશભાઈ - ૯૮૨૪૩ ૦૨૫૫૩, ૯૫૫૮૯ ૪૨૨૨૮
કૌશીકભાઈ - ૯૮૨૪૫ ૮૧૨૨૫

ડેવલોપર્સ:

એચ.એચ. કોર્પોરેશન
૪, આમ્રકુંજ બંગ્લોઝ, રજવાડી મંડપની સામે,
સ્વપ્ન વિલા-૧ ની પાછળ,
પેથાપુર ચાર રસ્તા, પેથાપુર.
તા.જી. ગાંધીનગર ૩૮૨૬૧૦

આર્કિટેક્ટ:

એલીમેન્ટલ સ્ટુડીયો,
૯૭૨૫૩ ૨૪૪૨૦

સ્ક્રીપ્ટર:

દેવાંગભાઈ, અમદાવાદ.

NO ES: In the interest of continuous development in design & quality of construction the developers reserves all the rights to make any changes in the entire scheme or part of the scheme including specification, design, planning layout and purchaser shall abide by any such changed. Irregular payment shall cause cancellation of booking. At the time of Cancellation of the booking 10% service charge of the total amount paid shall be levied & balance payment shall be refunded only after the next available booking. Possession of the apartment shall be handed over only after full payment. Changes in external elevation shall not be permitted. Internal changes shall be done only with prior written permission & shall be charged extra in advance. Variation in shades & size are likely in Vitrified & Glazed tiles due to constraints of availability & manufacturing. Details & dimensions in model & brochure are indicative and are for tentative representation of project only, it shall not be treated as legal documents and consumer act. GEB charges, Guda charges, Stamp duty, VAT, Service Tax and any other Taxes, Labor cess, Water connection & Initial maintenance contribution will be levied extra & shall be borne by the purchaser. Any additional charges or duties levied by the Govt. Local authorities during or after the completion of the Scheme shall be borne by the purchaser Pavement in favor of "H H CORPORATION" Pethapur Project.